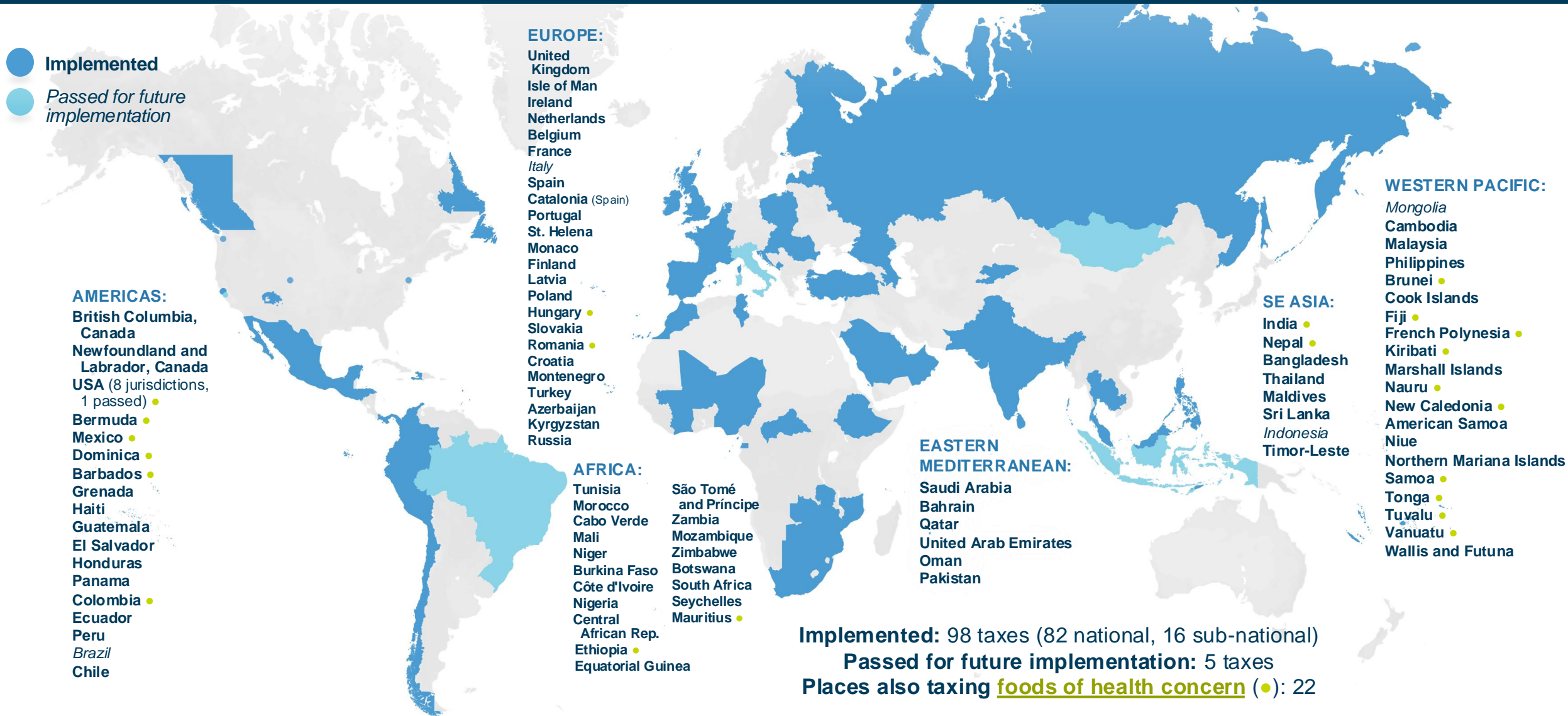


# Fiscal policies: sweetened beverage taxes



# Drink taxes: Europe (continued next)

**BELGIUM: €0.68 per L (US\$0.74/L)** on soft drinks with added sweeteners;

**€0.41/L (US\$0.45/L)** and **€0.68/kg (US\$0.74/kg)** on liquid and powder concentrates, respectively.

Exempt: fruit juices/drinks (sweetened or not), unflavored soy milk. *Implemented 2009, updated 2016*

**UNITED KINGDOM: £0.18 per L (US\$0.23)** on drinks with 5–8 g total sugar/100 mL; **£0.24 per L (US\$0.31)**

on drinks with >8 g total sugar/100 mL. Exempt: dairy drinks (>75%) and 100% fruit/vegetable juices. *Implemented 2018*

**ISLE OF MAN: £0.18 per L (US\$0.23)** on drinks with 5–8 g total sugar/100 mL;

**£0.24 per L (US\$0.31)** on drinks with >8 g /100 mL. Mirrors UK levy. *Implemented 2019*

**IRELAND: €24.39 per hL (US\$0.27/L)** on drinks containing ≥ 8 g total sugar/100 mL;

**€16.26 per hL (US\$0.18/L)** on drinks with 5–8 g total sugar/100 mL. Excludes 100% juices, plant protein/milk-based drinks with >119 mg/100 mL calcium content. *Implemented May 2018, updated 2019 (extended base)*

**FRANCE: Sliding scale from €3.34/hL (US\$0.36/L)** for <1 g sugar/100 mL to **€26.09/hL (US\$0.28/L)**

for up to 15 g sugar/100 mL in soft drinks with added sweeteners; Each gram added sugar >15 g/100 mL incurs additional **€2.21/hL (US\$0.24/L)**. Exempts dairy drinks. *Implemented 2012; updated 2018 (to sliding scale)*

**SPAIN: 21% VAT (increase from 10%)** on drinks containing added natural and derived

sweeteners and/or sweetening additives, excluding dairy. *Implemented 2021*

**CATALONIA, SP: €0.08 per L (US\$0.09) excise** on soft drinks with added sugars

and 5–8 g sugar/100 mL or **€0.12 per L (US\$0.13)** with >8 g sugar/100 mL. *Implemented 2017*

**PORTUGAL: 4-tiered tax based on sugar content**

**€0.01/L (US\$0.01)** on drinks with <25 g sugar per liter; **€0.06/L (US\$0.07)** if 25 to <50 g/L;

**€0.08/L (US\$0.09)** if 50 to <80 g/L; or **€0.20/L (US\$0.22)** on drinks with ≥80 g/L.

Exempts milks (cow or substitute) and 100% juices. *Implemented 2017; updated 2018*

**MONACO: Multi-tiered excise** on soft drinks containing added sugars. 100% juices exempt;

**€3.34/hL (US\$0.36)** on drinks containing ≤1 kg added sugars per hL,

increases per additional kg up to **€26.09/hL (US\$0.28)** on drinks

containing 15 kg added sugar/hL. Each additional kg of sugar over 15 kg/hL

incurs another **€2.21/hL (US\$0.24/L)**. **€3.34 per hL (US\$0.36)** on

beverages containing synthetic sweeteners. *Implemented 2012, updated annually.*

**CROATIA: Tiered excise**

**€0 per hectoliter** on drinks with ≤2 g sugar/100 mL;

**€1.33/hL (US\$1.45/L)** on drinks with 2–5 g sugar/100 mL;

**€3.98/hL (US\$4.33/L)** on drinks with 5–8 g sugar/100 mL;

**€7.96/hL (US\$8.66/L)** on drinks with >8 g sugar/100 mL;

Syrups & concentrates taxed at 4 rates based on sugar content. Higher rates on energy drinks with methylxanthine or taurine. *Implemented 2020*

**FINLAND: Tiered excise**

on soft drinks with added sweeteners/flavors:

- **€0.09/L (US\$0.10)** if 0 g sugar/100 mL  
(same rate as plain & mineral waters)

- **€0.16/L (US\$0.17)** if 0.5–2.5 g/100 mL

- **€0.24/L (US\$0.26)** if 2.5–5 g/100 mL

- **€0.32/L (US\$0.35)** if 5–8 g/100 mL

- **€0.40/L (US\$0.44)** if 8–11 g/100 mL

- **€0.48/L (US\$0.52)** if >11 g/100 mL

*Implemented 2011, most recently updated 2023*

**NETHERLANDS:**

**€26.13 per hL**

**(US\$0.28/L) excise** on

soft drinks; dairy drinks

exempt; mineral waters

excluded as of January

2024. *Implemented*

*1992, updated*

*2011,*

*'23, '24*

**ROMANIA: RON 60/hL**

**(US\$0.13/L)** on soft drinks

with added sugar containing

>8 g total sugar/100 mL;

**RON 40/hL (US\$0.09/L)**

for 5–8 g total sugar/100 mL.

**19% VAT** on soft drinks

containing sweeteners or flavorings

(increase from 9% VAT). *Implemented*

*Jan. 2024. See also: [non-essential food tax](#)*

**LATVIA: Tiered excise**

on drinks with added sweeteners or flavoring:

**€0.074/L (US\$0.08)** if total sugar <8 g/100 mL.

**€0.175/L (US\$0.19)** if total sugar >8 g/100 mL

(increasing to **€0.21/L** in 2026); Exempt: juices with <10%

added sugar, flavored waters with no added sweeteners/

flavorings. *Implemented 2004; updated 2016, 2022*

**POLAND: PLN 0.5 per L (US\$0.13)**

on soft drinks with added sweeteners, caffeine, or taurine;

+ **PLN 0.05 (US\$0.013)** per g sugar >5 g/100 mL;

**PLN 0.09/L (US\$0.02)** on drinks containing caffeine,

taurine. Total fee cannot exceed **PLN 1.2 (US\$0.31)**.

Exempt: sports or juice drinks with <5 g sugar/100 mL

and dairy drinks. Drinks with >20% juice content and >5g

sugar/100mL not charged base fee of PLN 0.5 per L.

*Implemented 2021*

**SLOVAKIA: €0.15 per L (US\$0.16)**

on sweetened non-alcoholic beverages; **€1.05/L** or

**€4.30/kg (US\$1.14/L or \$4.68/kg)** on concentrates. For

drinks containing >150 mg/L caffeine: **€0.30/L**

**(US\$0.33)** on ready-to-drink sweetened beverages;

**€2.10/L** or **€8.60/kg (US\$2.29 or \$9.36)** on

concentrates. *Implemented January 2025*

**HUNGARY: HUF 23 per L (US\$0.06/L)**

on prepackaged soft drinks with >8 g sugar/100 mL;

**HUF 8/L (\$0.02)** on drinks with ≤8 g sugar/100 mL;

exempts drinks with >50% fruit/vegetable or milk content.

**HUF 105** or **310/L (US\$0.29 or \$0.84)** on syrup

concentrates with ≤8 or >8 g sugar/100 mL, respectively;

**HUF 65** or **390/L (US\$0.18 or \$1.06)** on caffeinated

drinks depending on additives. *Implemented 2011, updated*

*2018, 2022 (increased rates, tiered based on sugar).*

*See also: [non-essential food tax](#)*

# Drink taxes: Europe (continued), E. Mediterranean, N. Africa

## **RUSSIA: 7 rubles per L (US\$0.08/L)**

on drinks sweetened with added sugar, syrup, or honey containing >5 g sugar per 100 mL; exempt: juice- and milk-based drinks. *Implemented 2023*

## **MONTENEGRO: €25 per hL (US\$0.27/L)**

on carbonated, water-based soft drinks with added sugar or other sweeteners; excludes all non-carbonated soft drinks. *Implemented 2012, updated 2023*

## **TUNISIA: 25% VAT**

on sweetened/flavored water-based soft drinks; fruit juices (whether or not sweetened); and extracts, essences and concentrates of coffee, tea or mate; **10%** on cocoa-based beverage preparations; **40%** on concentrates. *Implemented 2018*

## **MOROCCO: Tiered VAT**

based on juice and sugar content:

Soft drinks containing <10% juice or lemonades with <6% lemon juice:

- **MAD 0.3/L (US\$0.03)** on drinks with <5 g added sugar per 100 mL
- **MAD 0.4/L (US\$0.04)** on drinks with 5–10 g/100 mL added sugar
- **MAD 0.45/L (US\$0.05)** on drinks with ≥10 g/100 mL added sugar

Soft drinks containing ≥10% juice or lemonades with ≥6% lemon juice:

- **MAD 0.1/L (US\$0.01)** on drinks with <5 g added sugar per 100 mL
- **MAD 0.125/L (US\$0.013)** on drinks with 5–10 g/100 mL added sugar
- **MAD 0.15/L (US\$0.015)** on drinks with ≥10 g/100 mL added sugar

**6 MAD/L (US\$0.62)** on energy drinks (with 14.5–32 mg caffeine/100 mL + addition of other stimulating substances). *Implemented 2019*

## **TURKEY: 35% excise**

on carbonated sweetened/flavored soft drinks, sweetened juices, lemonades, energy drinks, sports drinks, sweetened teas and coffees, and similar sweetened or flavored beverages. *Implemented 2002, updated 2017 (base extended from just "cola sodas")*

## **SAUDI ARABIA: 50% excise**

on sweetened soft drinks; **100% excise** on energy drinks. *Implemented 2017, updated 2019 (expanded 50% excise from carbonated to all sweetened soft drinks)*

## **AZERBAIJAN:**

**ANZ 3 per L (US\$1.76/L)** on energy drinks. *Implemented 2019*

## **KYRGYZSTAN: 3 som per L (US\$0.034)**

on sweetened soft drinks; **6 som/L (US\$0.069)** on energy drinks. *Implemented 2022, updated 2023 (increased from 1 to 2 som/L), 2024 (increased to 3 som/L)*

**PAKISTAN: 20% excise** on sweetened or flavored aerated soft drinks; **17% excise** on flavored milks and yogurt-based drinks; **10% excise** on juices, syrups, squashes, & still waters (with/without sweeteners). *Implemented 2019, updated 2022, 2023*

## **UNITED ARAB EMIRATES: 50% excise** on sweetened drinks;

**100% excise** on energy drinks. *Implemented 2017, updated 2019 (expanded 50% excise to sweetened drinks)*

## **OMAN: 50% excise** on sweetened drinks; **100% excise** on energy drinks.

*Implemented 2019, updated 2020 (expanded excise from carbonated to sweetened drinks)*

## **QATAR: 50% excise**

on aerated soft drinks (unflavored aerated water exempt); **100% excise** on energy drinks and concentrates. *Implemented 2019*

## **BAHRAIN: 50% excise**

on aerated soft drinks; **100%** on energy drinks. *Implemented 2017*

# Drink taxes: Africa (continued)

**NIGER: 15% excise** on all soft drinks, including fruit juice, excluding water;

**15% excise** on extracts, essences or concentrates of tea and coffee.  
*Implemented 2015*

**BURKINA FASO: 50% excise** on energy drinks

**15% excise** on other sugar-sweetened beverages;  
excludes drinks containing >20% milk and locally-produced juices.  
*Implemented 1995, updated 2019, 2023 (increased from 10% to 15%  
on sugar-sweetened beverages, introduced energy drink excise)*

**MALI: 10% excise** on carbonated, sweetened waters;

**10% excise** on juices and concentrates. *Implemented 2005*

**CABO VERDE: 10% excise**

on water-based soft drinks containing added sugar  
or other sweeteners. *Implemented 2019*

**CÔTE D'IVOIRE: 20% excise**

on all sugar-sweetened beverages. *Implemented 2018*

**SAO TOME AND PRINCIPE: 20% excise**

on soft drinks with added sugar and on liquid and powder concentrates.  
*Implemented 2017, updated 2021*

**SAINT HELENA: £1.00 per L excise (US\$1.29)**

on carbonated drinks with ≥15 g sugar per L. *Implemented 2014,  
updated 2018 (rate increased, base extended to include juices)*

**ZIMBABWE: US\$0.05 per L** on energy drinks. *Implemented 2022*

**BOTSWANA: BWP 0.02 per g sugar (US\$0.001)**

on all sweetened beverages, including juices (first 4g per 100mL exempt). If  
sugar content is not labeled, default tax is based on 25 g sugar/100mL.  
*Implemented 2021*

**NIGERIA: NGN 10 per L (US\$0.006/L)**

on non-alcoholic, carbonated, sweetened beverages  
(including diluted concentrates). *Implemented 2022*

**CENTRAL AFRICA REPUBLIC: 10% excise**

on all imported soft drinks excluding plain & mineral water. *Implemented 2019*

**EQUATORIAL GUINEA: FCFA 100/L (US\$0.17/L)**

on caloric soft drinks with added sugar, syrup or energy  
*Implemented 2020*

**ETHIOPIA: 25% excise** on sweetened soft drinks,

concentrates, and non-alcoholic beers; **10% excise** on waters  
(unsweetened); 100% juices exempt. *Implemented 2003,  
updated 2020 (rates lowered). See also: [non-essential food tax](#)*

**ZAMBIA: ZMW 3 per L (US\$0.11/L)**

on water-based soft drinks containing added sugar or other sweeteners or  
flavoring; excludes fruit or vegetable juices.  
*Implemented 2018*

**MOZAMBIQUE: MT 1 per L (US\$0.016/L)**

on water-based soft drinks containing added sugar or other sweeteners or  
flavoring; excludes fruit or vegetable juices.  
*Implemented 2018 (rate increased in 2019 and 2020)*

**SEYCHELLES: SCR 4 per L (US\$0.28) import tariff**

on all beverages containing >5 g sugar/100 mL. Exempt: fresh, locally produced drinks without  
additives and plain milks. *Implemented 2019*

**MAURITIUS: MUR 0.06 per g sugar (US\$0.0013)**

on all sugar-sweetened beverages with >4 g total sugar/100 mL (includes juices, milk-based  
drinks). *Implemented 2013, updated 2016 (to cover all SSBs) and 2022 (increased rate and  
introduced 4 g sugar threshold). See also: [non-essential food tax](#)*

**SOUTH AFRICA: ZAR 0.021 per g sugar (US\$0.0012)**

on sugary drinks and concentrates (4g per 100mL exempt). If sugar not labeled,  
default tax based on 20 g sugar/100mL; exempts dairy drinks and 100% juices.  
*Implemented 2018*

# Drink taxes: SE Asia, Western Pacific *(continued next)*

## BANGLADESH: 25% supplementary duty (SD)

on carbonated, sugar-sweetened soft drinks; **35%** on energy drinks; **5%** on mineral waters. For imports: **150% SD** on SSB under HS heading 2202, **20%** on unsweetened waters and juices, **350%** on concentrates. *Implemented 2012.*

## NEPAL: Rs 52/L excise (US\$0.37/L) on energy drinks;

**Rs 13.50/L (US\$0.10/L)** on fruit and vegetable juices (whether or not containing added sweeteners); **Rs 45/L (US\$0.32/L)** on non-alcoholic beer. *Implemented 2002, updated (rates increased) 2022, 2023, 2024. See also: [non-essential food tax](#)*

## INDIA: 28% goods and services tax

on aerated drinks & lemonades plus 12% "sin tax" on carbonated drinks containing added sweeteners or flavors and carbonated fruit juices. *Implemented 2017*  
*See also: [non-essential food tax](#)*

## SRI LANKA: Higher of either...

**Rs 12 per L (US\$0.04) or**  
**Rs 0.30 per gram sugar over 6 g/100 mL (US\$0.001/gram)** on sweetened soft drinks;

**Rs 0.30 per g sugar over 8 grams** on juice-based drinks. Milk-based drinks exempt. *Implemented 2017, updated 2018 (rate lowered, base extended) and 2020 (sugar thresholds added)*

## MALDIVES: MVR 60.55 per L (US\$3.92)

**import tax** on all energy drinks;

**MVR 8/L (US\$0.52) import tax** on other soft drinks except for 100% juices, juice-based drinks, milk-based drinks, ready-to-drink sweetened teas and coffees, and concentrates. *Implemented 2017, updated 202 (rates roughly doubled)*

## MALAYSIA: RM 0.50 per L (US\$0.11)

on carbonated, flavored, & other non-alcoholic drinks with >5 g sugar per 100 mL, juices with >12 g sugar per 100 mL;  
**RM 0.47 per 100g (US\$0.11)** on premix drinks with >33.3g per 100g (e.g., coffee, tea and chocolate premixes). *Implemented 2019, updated 2024 (increased from RM 0.40 to 0.50 per L and expanded to cover premixes.)*

## THAILAND: tiered excise based on sugar content on mineral waters, carbonated soft drinks, and juices,

- regardless of whether containing added sugars or other sweeteners:
- **THB 0/L** on drinks with <6 g sugar/100 mL
- **THB 0.3/L (US\$0.01)** on drinks with 6 to <8 g/100 mL;
- **THB 1/L (US\$0.03)** on drinks with 8 to <10 g/100 mL;
- **THB 3/L (US\$0.09)** on drinks with 10 to <14 g/100 mL;
- **THB 5/L (US\$0.15)** on drinks with >14 g per 100 mL.

Beverage concentrates used in retail beverage vending machines taxed from **THB 9–44/L** for sugar content ranging from 0 to >14 g/100 mL of beverage. *Implemented 2017, currently in phase 3 of implementation (rates will increase once more when final phase 4 begins April 1, 2025)*

## CAMBODIA: 15% excise on energy drinks;

**5%** on UHT milk-based, soy-based, coconut water-based, coffee-based/ flavored, and non-carbonated drinks; **10%** on all other non-alcoholic drinks. Excludes plain waters, milk, and 100% juices. *Implemented 2023 (replaced uniform 10% tax on all non-alcoholic beverages)*

## PHILIPPINES: 6 pesos per L (US\$0.10)

on sweetened drinks; **P12 per L (US\$0.21)** on drinks using HFCS. Exempt: dairy drinks, instant coffee, 100% juices, and drinks sweetened with stevia or coco sugar. *Implemented 2018*

## BRUNEI DARUSSALAM: BND 0.40 per L excise (US\$0.30)

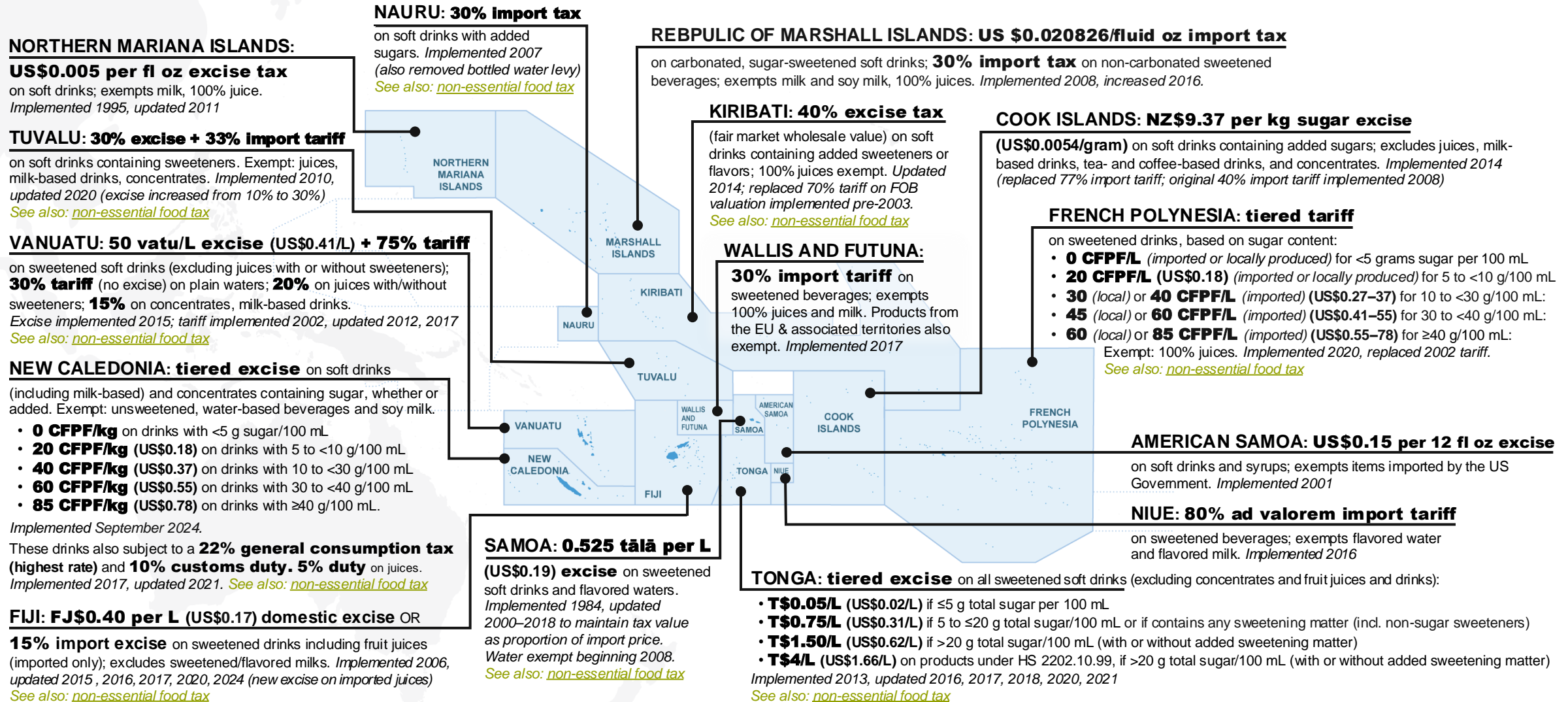
on all sugar-sweetened drinks excluding 100% juices; **5% tax** on tea & coffee preparations. *Implemented 2017, updated 2023 (removed exemption for SSBs with <6g sugar/100mL)*  
*See also: [non-essential food tax](#)*

## TIMOR-LESTE: US\$3 per L

On soft drinks containing added sweeteners or flavors, excluding 100% juices. *Implemented 2023*

*Western Pacific  
continued next...*

# Sweet drink taxes: Western Pacific (continued)



# Drink taxes: Americas (Mexico, Caribbean, Central, South)

**HAITI: 10% import excise** on soft drinks excluding plain water; *Implemented 2020*

**30% or 15% excise** on imported or locally produced energy drinks, respectively. *Implemented 2022*

**MEXICO: MX\$1.5737 per liter (US\$0.08/L)**

on soft drinks with added sugar; exempt: dairy-based drinks. *Implemented 2014, specific rate updated annually;*

**25% excise** on energy drinks and concentrates to prepare them. *Implemented 2019. See also: [non-essential food tax](#)*

**GUATEMALA: GTQ 0.18 per L excise (US\$0.023/L)**

on carbonates, and syrups and concentrates used to produce them;

**GTQ 0.12 (US\$0.016/L)** on isotonic or sports drinks;

**GTQ 0.10 (US\$0.013/L)** on juices, nectars, and yoghurt drinks;

**GTQ 0.08 (US\$0.01/L)** GTC\$0.08 on natural water in containers up to 4 L. *Implemented 2002*

**EL SALVADOR: 10% ad valorem** on all carbonates (sweetened or not),

energy drinks, and concentrates used to make them; Exempt: drinks containing

>20% milk, plain (unsweetened uncarbonated) bottled water. **5% ad valorem**

on sports drinks, juices, fruit drinks, and concentrates used to make them;

**US\$0.20 per L** on energy drinks. *Implemented 2010*

**HONDURAS: HNL 0.9959 per L excise (US\$0.04/L)**

on all soft drinks; exempt: juices, plain milk, plain water. *Implemented 2020*

**PANAMA: 7% ad valorem tax** on sodas (previously 5%);

**5%** on other non-alcoholic drinks with added caloric sweeteners; **10%** on syrups & concentrates. Exempt: dairy drinks, juices with >7.5 g sugar/100 mL. *Implemented 2019*

**PERU: 25% ad valorem tax** on soft drinks containing >5 g sugar/100 mL,

including non-alcoholic beer (increase from 2018 rate of 17%);

**17% tax** on drinks containing 0.5–5 g sugar/100 mL (unchanged);

**12% tax** on drinks with <0.5 g sugar/100 mL (decrease from 17% rate).

Exempt: Plain water, 100% juice, plain milk, drinkable yogurts.

*Implemented 2018, updated 2019 (decreased lowest sugar threshold to 12% rate) and 2021 (lowered upper sugar threshold to 5 g/100 mL)*

**BERMUDA: 75% ad valorem import tax**

on soft drinks containing  $\geq 5$  g added sugar per 100 mL and concentrates containing added sugar; **25%** on soft drinks containing <5 g added sugar per 100 mL; **35%** on non-dairy creamers containing added sugar. Exempt: low-calorie sweetened beverages, fruit juices and drinks, and unsweetened water. *Implemented 2018, updated 2019 (increased rate), 2023 (sugar tiers added). See also: [non-essential food tax](#)*

**DOMINICA: 10% ad valorem tax** on energy drinks and drinks containing cocoa;

**EC\$0.20 per L excise (US\$0.074/L)** on carbonated soft drinks containing added sweetener or flavors; juice drinks exempt. *Implemented 2015. See also: [non-essential food tax](#)*

**BARBADOS: 20% excise tax** on sugary drinks,

including carbonated soft drinks, juice drinks, and sports drinks; exempts 100% juice, coconut water, and plain milk. *Implemented 2015 (10% tax); updated (doubled) 2022. See also: [non-essential food tax](#)*

**GRENADA: 20% VAT (increase from 15%)**

on carbonated beverages, soft drinks/sodas, and drinks with added sugar. *Implemented 2023*

**COLOMBIA: 3-tiered specific excise based on added sugar content**

on all ultra-processed, sweetened, non-alcoholic drinks. Exempt: plain water, 100% juices, infant formula:

**COL\$0 per 100 mL** on drinks with <6 g added sugar per 100 mL;

- 2025 sugar threshold lowers to <5 g

**COL\$18 per 100 mL (US\$0.004)** on drinks with  $\geq 6$  to <10 g added sugar per 100 mL;

- Nov. 1, 2024, increases to **COL\$28/100mL**; 2025 rate **COL\$38/100mL** + sugar threshold lowers to  $\geq 5$  to <9 g

**COL\$35 per 100 mL (US\$0.009)** on drinks with  $\geq 10$  g added sugar per 100 mL;

- Nov. 1, 2024, increases to **COL\$55/100mL**; 2025 rate **COL\$65/100mL** + sugar threshold lowers to  $\geq 9$  g

*Implemented November 1, 2023. See also: [non-essential food tax](#)*

**ECUADOR: 10% ad valorem tax** on soft drinks with <25g of sugar/L and on all energy drinks,

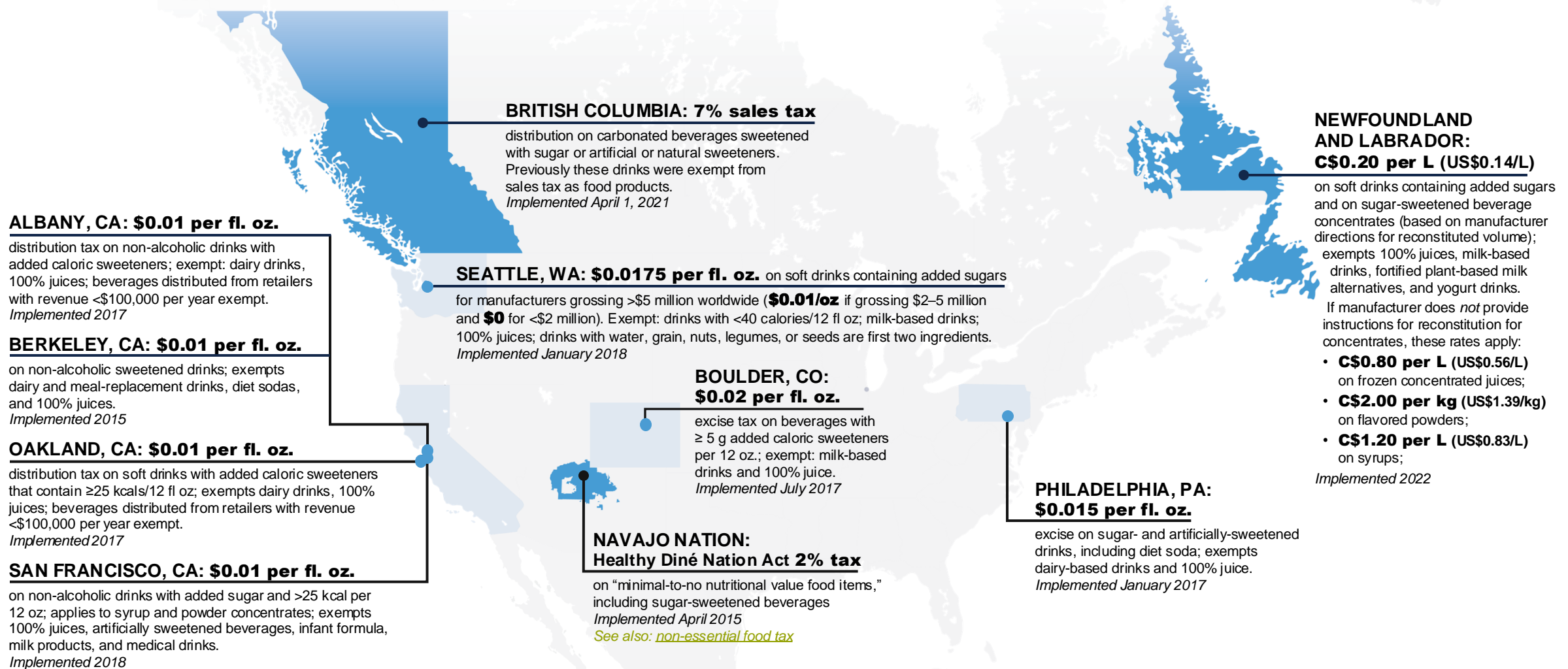
regardless of sugar content; **US\$0.18 per 100 grams sugar** on drinks with >25 g sugar/L. Exempt: dairy products and their derivatives, mineral water, and juices that have 50% "natural" content. *Implemented 2016*

**CHILE: 18% ad valorem tax** on sugary drinks containing >6.25 g sugar/100 mL;

includes all non-alcoholic drinks with added sweeteners; exempts 100% fruit juice and dairy-based beverages;

**10% ad valorem tax** on drinks with <6.25 g sugar/100 mL. *Implemented 2014*

# Drink taxes: Americas (North)





# Fiscal policies: New taxes enacted/passed for future

## **SANTA CRUZ, CA:** **\$0.02 per fl. oz.**

on non-alcoholic, sugar-sweetened beverages containing  $\geq 40$  calories per 12 fluid oz. Exempt: dairy-based drinks, drinks with natural sweeteners such as honey, baby formula, and beverages for medical use or meal replacement. Distributors with  $< \$500,000$  in gross annual revenue will be exempt.  
*Implementing May 1, 2025*

## **ITALY: €0.10 per L (US\$0.11/L)**

on all non-alcohol beverages with added caloric sweeteners for which the sweetener content is greater than 25g per liter.  
*Implementing July 1, 2025*

## **BRAZIL: selective tax**

on sweetened beverages; specific tax rates to be determined in 2025.  
*Implementation TBD*

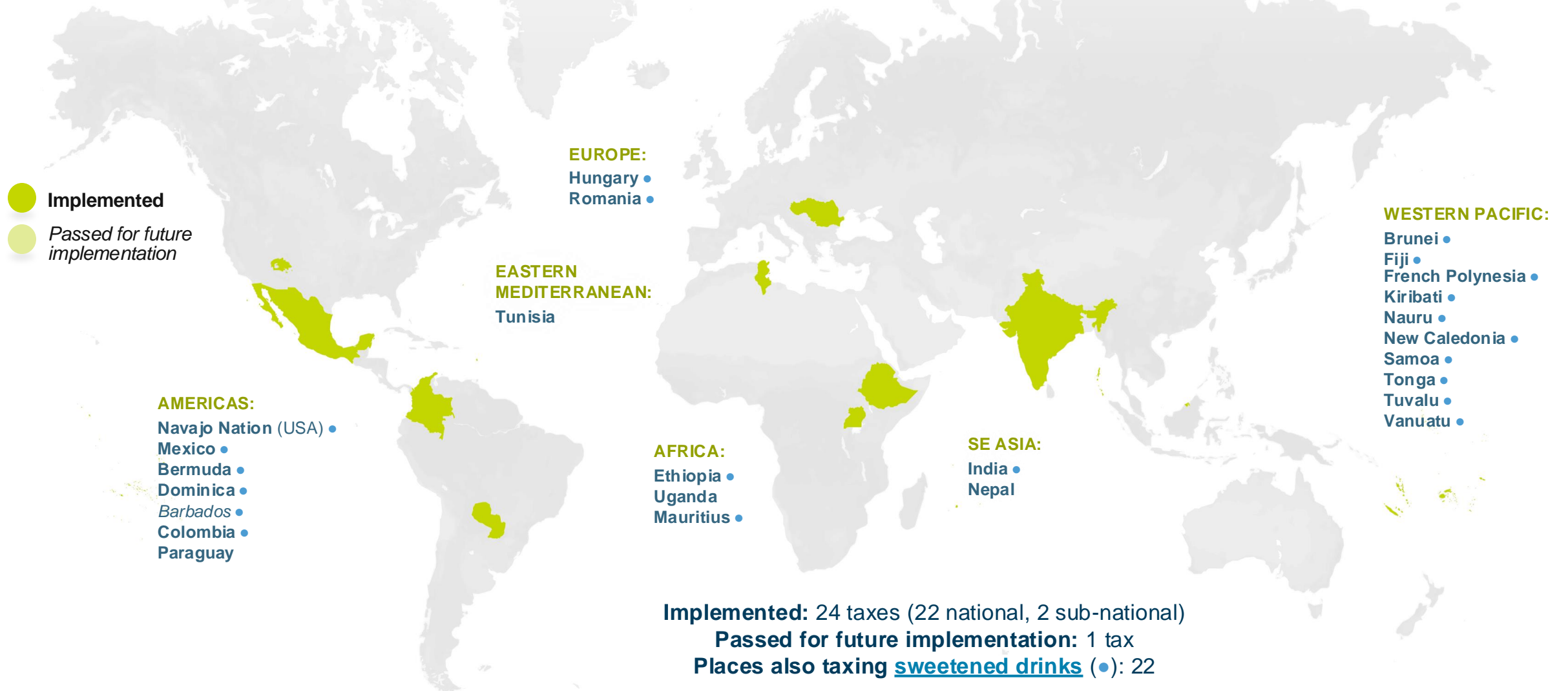
## **MONGOLIA: tiered excise**

On beverages containing sugar and sugar substitutes exceeding 5 grams per 100 milliliters:  
- 2027: **MNT 500 per L (US\$0.14/L)**  
- 2028: **MNT 525 per L (US\$0.15/L)**  
- 2029: **MNT 550 per L (US\$0.16/L)**  
*Implementing January 1, 2027*

## **INDONESIA: excise tax**

on sweetened, non-alcoholic beverages; Tax base and structure yet to be finalized.  
*Implementing July 2025*

# Fiscal policies: taxes on foods high in nutrients or ingredients of health concern



# Food taxes: Americas, Africa

## NAVAJO NATION:

### Healthy Diné Nation Act 2% tax

on snacks high in salt, saturated fat, and sugar; removed 6% tax on fruits and vegetables.

Implemented April 2015

See also: [sugary drink tax](#)

## MEXICO: 8% sales tax

on "non-essential foods" containing >275 calories per 100 grams in certain categories (including sweet and salty snacks, confectionery, and desserts).

Implemented 2014

See also: [sugary drink tax](#)

## COLOMBIA: 10% tax on ultra-processed products

(edible products formulated from food-derived substances along with additives) that contain added sugars, sodium, and saturated fats and exceed the following thresholds:

- ≥1 mg of **sodium** per 1 kcal and/or ≥300 mg of **sodium** per 100 g
- ≥10% of total energy from **free sugars**
- ≥10% of total energy from **saturated fats**

Tax rate will increase to **15%** November 1, 2024, and **20%** in 2025.

Implemented 2023

See also: [sugary drink tax](#)

## PARAGUAY: 2% ad valorem excise

on packaged products containing >500 calories/100 g; exempts seeds in their natural state and oils or fats.

Implemented 2020

## BERMUDA: 75% import duty

on sugars, confectionery, cocoa powders and chocolates containing added sugar.

Implemented 2018, updated 2019

See also: [sugary drink tax](#)

## DOMINICA: 10% excise tax

on high-sugar foods including chocolates, confectionery, and chewing gums

Implemented September 2015

See also: [sugary drink tax](#)

## BARBADOS: 20% excise tax

on certain snacks with high salt content

(e.g., chips/crisps, salted nuts, corn curls, hot dogs, popcorn, pretzels, and crackers).

To implement June 1, 2025

See also: [sugary drink tax](#)

## ETHIOPIA: Excise on goods "hazardous to health"

- **30–50%** on edible fats and oils and their products:
  - **30%** on fats/oils with ≥40g sat. fat per 100g (or if unlabeled)
  - **40%** on hydrogenated fats/oils with ≥40g sat. fat per 100g, or >0.5g of trans fat per 100g (or if sat. fat unlabeled)
  - **50%** if edible margarine with ≥40g sat. fat per 100g, or more than 0.5g of trans fat per 100g
- **20%** on any type of sugar (solid or liquid) excluding molasses, maple sugar and maple syrup
- **30%** on chewing gums, confectionery, cocoa-containing foods

Implemented 2020

See also: [sugary drink tax](#)

## UGANDA: Volumetric excise tax

- **Ush 100 per kg (US\$0.027/kg)**

on cane/beet sugar, sucrose in solid form; Implemented 2014, updated 2016 (increase rate)

- **Ush 200 per L (US\$0.055/L)** on cooking oil; Implemented 2018.

- **25% tariff** on imported refined sugar; Implemented 2023.

## MAURITIUS: 6 cents per gram sugar excise

(US\$0.0013/g) on non-staple, sugar-sweetened food products including syrups and other sugars in solid form, sugar confectionery, cocoa products, breads and mixes, fruit preserves and jams, fruit, nut butters, ice cream.

Implemented February 2013, last updated 2022

See also: [sugary drink tax](#)

# Food taxes: Europe, Eastern Mediterranean, SE Asia

## HUNGARY: Public Health Product Tax (NETA)

on prepackaged products high in salt, sugar, or saturated fat:

- **40–210 HUF/kg (US\$0.00011–0.00057/gram)** on sweetened products (rate varies depending on sugar, cocoa, and milk content)
- **390 HUF/kg (US\$0.00106/g)** on salty snacks (containing >1 g salt/100 g or >2 g sat. fat/100 g)
- **390 HUF/kg (US\$0.00106/g)** on seasonings (containing >5 g salt/100 g)
- **260 or 780 HUF/kg (US\$0.00071 or \$0.00212/g)** on marmalades/jams (higher rate if >30 g sugar/100 g)
- **65 or 210 HUF/kg (US\$0.00018 or \$0.00057/g)** on sweet or salty filled pastas (higher rate if >25 g sugar/100 g or >1 g/100 g salt; lower rate if <25 g sugar/100 g)

Implemented 2011, updated (increased rates) 2012, 2019, 2022 (increased coverage and rates)  
See also: [sugary drink tax](#)

## TUNISIA: 10% excise tax

on sugar confectionery, chocolates and other products containing cocoa, bakery products, pastries, biscuits, ice creams, sauces, mixed condiments, seasonings, animal fats, fish liver oil, seed oils, food preparations used as substitutes for breast milk, tapioca

- **15% excise** on certain spices (cinnamon, cloves, nutmeg, mace, anise, ginger, turmeric, etc.)
- **25% excise** on preparations for sauces, condiments and seasonings.
- **27% excise** on sugar and maple syrup, cocoa butter/fat/oil/paste, starches (wheat, cassava, corn, other).

Implemented 2018

## ROMANIA: 19% VAT (standard VAT rate)

on foods containing >10g added sugars per 100g product (**increase from reduced VAT rate of 9%**). Exempt: powdered milks for infants/young children, cakes, and biscuits (taxed 9% VAT).

Implemented 2024

See also: [sugary drink tax](#)

## NEPAL: Rs 20/kg (US\$0.00015/g) excise

on specific salty snacks (cheeseballs, Lays, Kurkure, Kurmure) and pastas (spaghetti, macaroni, noodles, lasagna, gnocchi, ravioli, etc.);

**Rs 18/kg (US\$0.00013/g)** on potato chips;

**Rs 110/quintal (US\$0.0079/kg)** on sugars (cane, molasses, other);

Implemented 2002, updated 2022, 2023, 2024 (rates increased)

See also: [sugary drink tax](#)

## INDIA: 6–12.5% ad valorem excise

on animal or vegetable fats, margarine, processed meats, sweet biscuits and cakes, sugar (cane, beet, lactose, maple, glucose, fructose, molasses), cocoa products, cereals, flour, milk powder, pasta, bread, pastries, cakes, sweet biscuits, wafers, sugar confectionaries, sauces, and ice cream.

Implemented 2015, updated 2017

See also: [sugary drink tax](#)

# Food taxes: Western Pacific

## TUVALU: ad valorem excise taxes on “sin foods”

- **5%** on ice-cream, milk powder
- **10%** on canned chicken and tin fish, canned fruits
- **15%** on turkey tails, lamb flaps & neck, ghee (dripping oil)
- **20%** on corned beef
- **25%** on non-fortified noodles, Chow noodles
- **30%** on salted beef, sausages/hot dogs/frankfurts, marmite/vegemite, condensed milk, candies
- **35%** on brown sugar, pork luncheon (e.g., Spam)
- **45%** on pure butter, table spread butter, milk chocolates
- **50%** on peanut butter, Twisties
- **55%** on UFOs, Rewa Butter

Implemented 2021. [See also: sugary drink tax](#)

## NAURU: 50% import excise on sugary foods, including...

sugar confectionery, chocolate & foods containing cocoa, biscuits, cakes, ice creams, jams/jellies, peanut butter, and sugars (cane or beet, chemically pure sugars in solid form, sugar syrups, etc.). *Implemented 2007, updated 2014 (increase rate from 30%)*

[See also: sugary drink tax](#)

## SAMOA: 8% excise tax

on sugar confectioneries, cocoa products, sweet biscuits and cakes, bread products, savory snacks, instant noodles, pizza, and sugars other than beet/cane;

**5% excise** on beet/cane sugar and iodized salt. *Implemented 2016*

[See also: sugary drink tax](#)

## KIRIBATI: ad valorem excise tax

- **20%** on sugars (cane, beet, other)
- **30%** on sugars containing added flavor or color
- **50%** on chocolates and other cocoa-containing products
- **55%** on sugar confectionaries.

*Implemented 2014*

[See also: sugary drink tax](#)

## BRUNEI: 3% ad valorem excise tax

on sugars (cane, beet, lactose, maple, glucose, fructose, molasses), sugar confectioneries, and chocolates and other foods prepared with cocoa.

*Implemented 2017, updated 2022. [See also: sugary drink tax](#)*

## VANUATU: 20 VT/kg excise tax (US\$0.16/kg)

on certain meats and seafood (sausages, canned meat, preserved fish, caviar, crustaceans, etc.), sugar (cane, beet, lactose, maltose, glucose, fructose, maple, molasses), sugar confectionaries, malt extract, pastas, tapioca, and cereals.

*Implemented 2010, updated 2014, 2021. [See also: sugary drink tax](#)*

## NEW CALEDONIA: 22% general consumption tax

+ **tiered excise** on ice cream, confectionaries, chocolates, sauces, cereal-based sweets, biscuits, and bakery & pastry items:

- **CFP 0/kg** on items with <5 g sugar/100 g or mL
- **CFP 20/kg (US\$0.18/kg)** on items with 5–9.99 g/100 g/mL
- **CFP 40/kg (\$0.37/kg)** on items with 10–29.99 g/100 g/mL
- **CFP 60/kg (\$0.55/kg)** on items with 30–39.99 g/100 g/mL
- **CFP 85/kg (\$0.78/kg)** on items with 30–39.99 g/100 g/mL.

*Implemented 2018 (GCT) and September 2024 (excise).*

[See also: sugary drink tax](#)

## FIJI: FJ\$0.40 per kg (US\$0.17/kg) domestic excise or 15% import excise

on sweet biscuits, waffles, wafers, snack foods, sugar and frozen confectioneries, and ice creams. *Implemented 2024*

**32% import tax** on palm oil and MSG (increases from 15% and 5%, respectively, to 32% — highest of four fiscal duty rates in Fiji). *Implemented 2012. [See also: sugary drink tax](#)*

## FRENCH POLYNESIA: tiered tariff

on ice creams, confectionery, biscuits, jams & jellies:

- **CFP 0/kg** if contains <5 g sugar per 100 g or mL
- **CFP 20/kg (US\$0.18/kg)** if 5 to <10 g/100 g/mL
- **CFP 40/kg (\$0.37/kg)** if 10 to <30 g/100 g/mL
- **CFP 60/kg (\$0.55/kg)** if 30 to <40 g/100 g/mL
- **CFP 85/kg (\$0.78/kg)** ≥40 g/100 g/mL

*Implemented 2020, replaced 2002 tariff.*

[See also: sugary drink tax](#)

## TONGA: volumetric excise taxes

- **40 seniti/kg (US\$0.17/kg)** on chicken leg quarter cuts;
- **T\$1 per kg excise (US\$0.42/kg)** on sausages (*T\$0.50 if manufactured locally in Tonga*);
- **T\$1.15/kg (US\$0.48/kg)** on lamb/mutton flaps/breasts;
- **T\$1.50/L or kg (US\$0.62/L or kg)** on ice creams, sweet biscuits, waffles and wafers;
- **T\$2/kg (US\$0.83/kg)** on animal fat products (lard, pig fat, tallow, mayonnaise), turkey tails, instant noodles and some pastas (*T\$0.50 if manufactured locally in Tonga*);
- **T\$2.50/kg (US\$1.04/kg)** on other prepared/preserved meat of bovine animals;
- **T\$5/kg (US\$2.08/kg)** on some sugar confectionery and chocolate products

**15% import duty** on mutton flaps, turkey tails, ice cream.

*Implemented 2016. [See also: sugary drink tax](#)*